



EAC

[www.maema.ee](http://www.maema.ee)

info@maema.ee

+37253519369

Majaka põik 15

11414, Tallinn, Estonia

Dana Investment OÜ

# LIKA

---

baby carriage 3in1



Combined Foldable Baby  
Carriage Operation Manual

# BABY CARRIAGE OPERATION MANUAL

## CHAPTERS

- + Important Information
- + Safety Requirements
- + Care and Maintenance
  - Seat, External Cradle Surface and Hood Textile Care
  - Internal Cradle Lining Care.
- + Component Parts
- + Alternative Installations of Units on the Frame Completion
- + Assembly and Operation
  - Unfolding/Folding the Carriage
  - Installing/Removing the Front/Rear Wheels
  - Damping and Handle Height Adjustment
  - Cradle Installation/Deinstallation
  - Cradle Hood and Cover for Feet
  - Stroller Unit Installation/Deinstallation
  - Stroller Hood and Foot Cover
  - Footrest, Bumper and Five-Point Seatbelts Adjustment
  - Carrycot
- + Guarantee
- + Guarantee Card

Since models of baby carriages vary, our Maintenance Manual presents generalized figures and photographs. Therefore, the design, colors and materials of the item bought by you may differ from those presented in the Manual.

The manufacturer reserves the right to modify the goods design, delivery scope or manufacture methods in a continuous process of improving the product end-user performance and quality.

Under Clause 4, Article 13 of Customs Union Technical Regulation CU TR 007/2011 "On Safety of Products Intended for Children and Adolescents", the Customs Union conformity mark may be printed on the packing since it is impossible to apply the mark because of peculiarities of the items.

The combined foldable modular baby carriage has been manufactured and approved in conformity with mandatory requirements of the European Union standards and existing technical specifications; it is considered as fit for service.

The product meets the requirements of CU TR 007/2011.

## SAFETY REQUIREMENTS

- + Before using the baby carriage, read this Operation Manual carefully.
- + Before you start using the carriage, make sure the cradle, stroller unit or carrycot fastening mechanisms are correctly installed.
- + For the sake of your child's safety, remove and discard all polyethylene bags and other packing elements. Only after this, you can start using the carriage.
- + When adjusting the carriage, take care to prevent contact of its moving parts with the child's body.
- + When using the stroller unit, always use both safety belt elements, the waist belt and the strap between the child's legs.
- + The carriage is intended for carrying only one child.
- + The chassis may be used with the cradle, the seat or the carrycot.
- + The carriage cradle is intended for babies that cannot sit or turn over by themselves and move on their hands and knees.
- + It is prohibited to carry the cradle with a child holding it by the hood.
- + Never leave the child in the carriage unattended.
- + Never place the carriage near stairs or steps.
- + Do not lower and do not raise the carriage on stairs and other sloping surfaces with a child inside it.
- + Always use safety belts.
- + Always apply brakes when you stop the carriage.
- + Do not hang heavy objects on the carriage handle since it may turn over.
- + Raise the carriage front wheels if you have to push it over a curb or a step.
- + Do not use the carriage when roller skating or jogging.
- + Do not allow the child to raise and stand inside the carriage unattended.
- + Do not allow children to play with the carriage or hang on it.
- + Open flame, radiators, electric and gas furnaces are sources of danger. Do not leave the carriage near them.
- + Protect the carriage from impacts and mechanical damage. For prevention of frame distortion, do not overload the carriage above 20 kg, do not drop the carriage and do not rock it in the transversal direction.
- + The carrycot may be used for children aged from 0 to 6 months, weighing maximum 13 kg. It is suitable for babies who cannot sit, turn over or crawl by themselves.
- + If the carrycot is used together with the chassis, please remember that the baby carriage does not replace a bassinet or a bed; if the baby is sleepy you should place him/her in an appropriate bassinet or bed.

- + The maximum load in the shopping basket (net) is 5 kg.
- + The maximum baby carriage operation and storage temperature is - 30°C.
- + The rubber tires may leave traces on some surfaces.
- + Tire pressure must not exceed 1 bar.
- + Protect rubber tires from contact with oil products. For smooth rotation of the wheels, clean axes from dirt, oil axes and sleeve bearings regularly.
- + All friction and revolving parts, as well as metal parts must be oiled and wiped with a dry cotton cloth from time to time. The frame surface must be clean.
- + For avoidance of tearing the textile parts of units, do not open or close the hood at minus temperatures.
- + Keep the baby carriage clean. Before operating the baby carriage and in the process of operation, it is recommended to wipe the carriage and air it in fresh air for some time. Clean the carriage body with a brush or a vacuum cleaner. After strolling under the rain or on the cold weather, wipe metal surfaces dry, wash off dirt with neutral detergents.
- + It is prohibited to use the baby carriage if at least one of its elements is with defect.
- + Use only recommended spare parts or those supplied by the manufacturer / distributor.
- + Store the baby carriage out of reach of children.
- + In case of noncompliance with the requirements of this manual, your child may be in danger.

- + This items needs periodical maintenance. Care and maintenance operations must be performed by adults only.
- + Keep the baby carriage dry and clean (both its lining and frame). Do not remove the outer skin of the carriage. The outer skin of the carriage can be cleaned with a damp sponge or cloth and a detergent.
- + Wipe the frame with a damp cloth and mild detergents. Do not use abrasive.
- + If the carriage chassis is marked with salt, it is recommended to wash it with tap water for avoidance of corrosion. After the frame has been wetted, it must be dried.
- + Always control wear level of the wheels and clean them from dust and sand.
- + Wheel axes must be oiled by applying several drops of lubrication oil between the axis and the hub.
- + All textile elements are removable.
- + In case the baby carriage became wet, it must be dried; wipe metal parts with a dry cloth.
- + As a result of prolonged exposure to sun, the carriage materials and textiles may change their color.
- + Do not fold the carriage when it is damp and do not store it in a damp place.
- + Check all safety devices, locks and straps from time to time for correct functioning. Never continue using a product that has a structural breakdown.

## **SEAT, EXTERNAL CRADLE SURFACE AND HOOD TEXTILE CARE**

- + Machine or hand washing in cold water with a mild detergent.
- + Wipe dry and keep away from direct sunlight until used next time or during storage.
- + Do not bleach, do not iron and do not dry clean.

## **INTERNAL CRADLE LINING CARE**

- + Wash in a washing machine with a mild detergent in cold water (30 °C) in a delicate washing mode.
- + After the textile is completely dry, keep it away from direct sunlight until used next time or during storage.
- + Do not bleach, do not iron and do not dry clean.

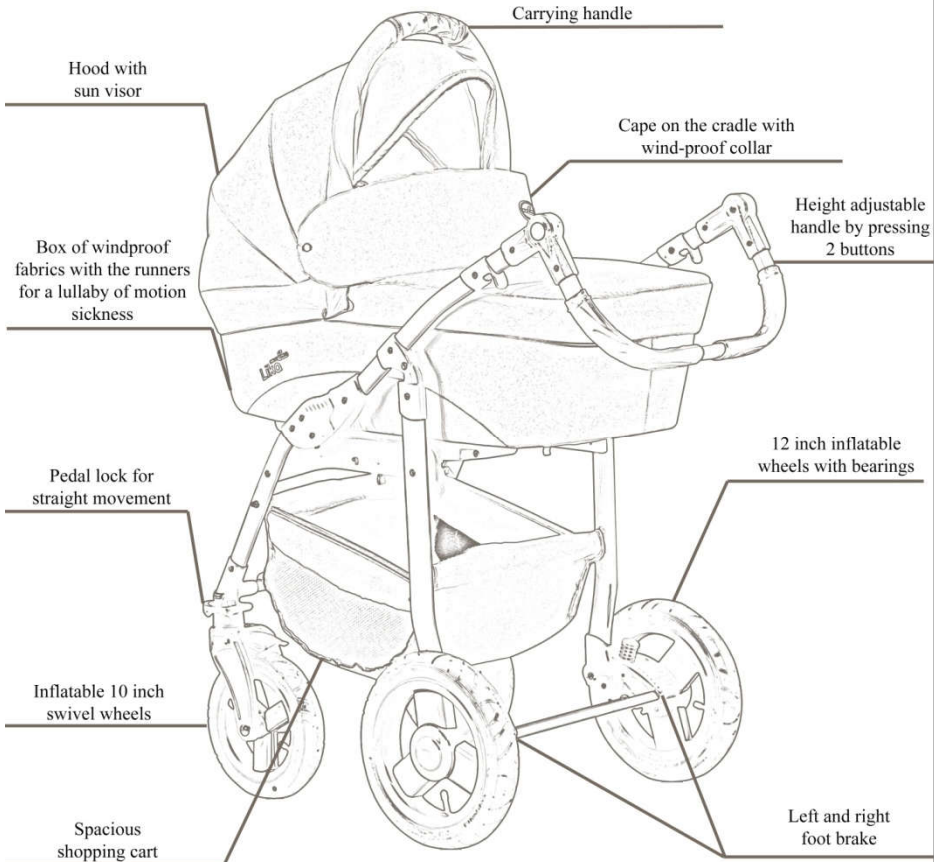
**WARNING!**

FOR CORRECT OPERATION OF THE BABY CARRIAGE, READ THE MANUAL CAREFULLY AND KEEP IT FOR FURTHER USE. NON-OBSERVANCE OF THE OPERATION MANUAL MAY AFFECT YOUR CHILD'S SAFETY. KEEP THE MANUAL NEAR THE BABY CARRIAGE.



**ATTENTION!**

REMOVE ALL PLASTIC PACKING UNITS BEFORE USE.



COMPONENT PARTS

## ALTERNATIVES OF UNITS INSTALLATION OF THE FRAME

variant with  
cradle



variant with seating unit  
and cover for the feet



option with sitting unit and  
handle-handrail



bag for mom



variant with  
carrycot



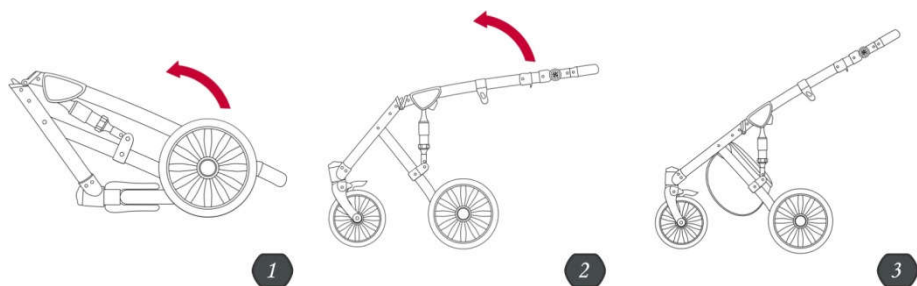
carrycot

### COMPLECTATION

- + Frame with basket (grid) for shopping - 1 pc.
  - + Cradle with hood and foot cover - 1 pc.
  - + The mattress in the cradle - 1 pc.
  - + Sedentary (walking) unit with hood and foot cover - 1 pc.
  - + Cradle-carrying with hood - 1 pc.
  - + Handle-grab handle for sedentary (walking) block - 1 pc.
  - + Wheels with bushings - 4 pc.
  - + Mom's bag with frame mounts - 1 pc.
  - + Rain cover - 1 pc.
  - + Mosquito net - 1 pc.
  - + Adapter (adapters) for installation of the cradle-carrying on the frame of the stroller - 1 pc.\*
  - + Extra mattress for the cradle - 1 pc.\*
  - + Packaging - 1 pc.
- \* - valid for some modifications

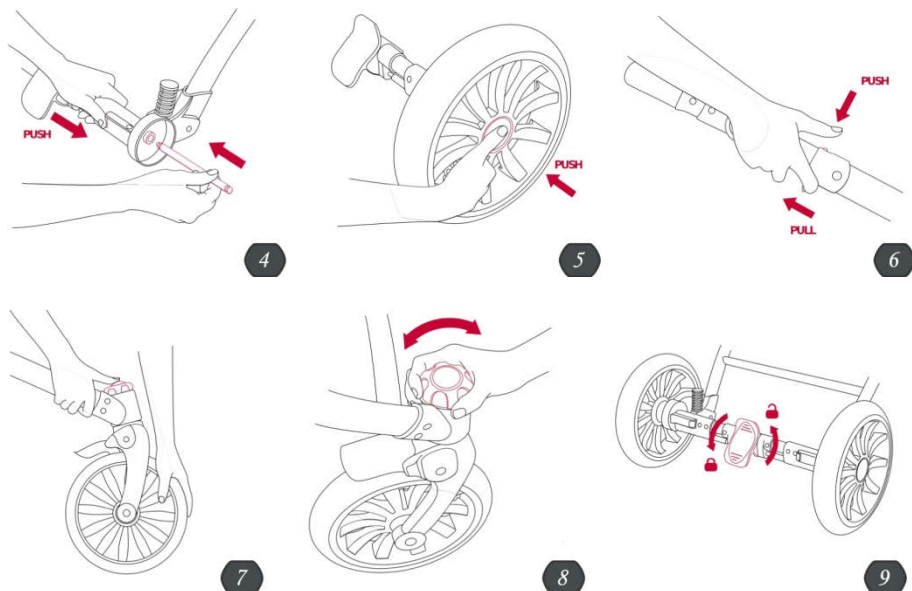


## UNFOLDING/FOLDING THE CARRIAGE



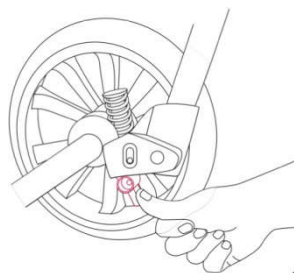
- + Take the carriage frame from the box, put it flat on the floor (Fig. 1). Pull the handle vigorously upward until the system is fixed (a characteristic sound must be heard) (Fig. 2, 3).
- + To fold the frame, push the red button on the right side of the frame. Then simultaneously pull the levers on both sides of the frame toward you (Fig. 6). Push down the frame until it is in the original position in which it was when the baby carriage was unpacked (Fig. 1).

## INSTALLING/REMOVING THE FRONT/REAR WHEELS

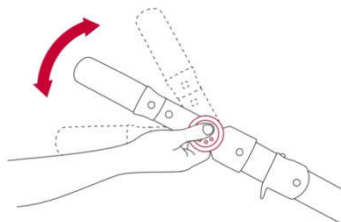


- + Before installing a rear wheel, first install the wheel axis holding down the red button (Fig. 4). Release the button in order to fix the axis (a characteristic sound must be heard). To install the wheel, push the wheel central button, then put the wheel on the axis as far as it will go, release the button and push the wheel until it is blocked on the axis (Fig. 5).
- + To remove the wheel, push it in the center and pull it along the axis until it is completely removed (Fig. 4). The wheel is removed without its axis, but the axis can also be removed after pushing the red button (Fig. 5). To remove a front wheel, push vertically the button over the wheel. The wheel is removed together with its axis (Fig. 7). If you want to lock the turning wheels system, turn the handle located below the wheels removal button (Fig. 8).
- + The baby carriage has a parking brake that blocks its rear wheels. To stop the carriage, press the pedal blocking the rear wheels (Fig. 9). To move on, return the pedal to its original position.

## DAMPING AND HANDLE HEIGHT AJUSTMENT



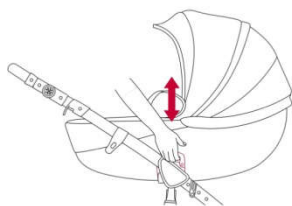
10



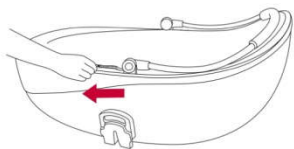
11

- + The baby carriage has a spring suspension system that can be adjusted on the frame. Your child's comfort depends on it (Fig. 10).
- + Press simultaneously the round buttons located on both sides of the handle. Adjust the handle to a height that is convenient for you (Fig. 11).

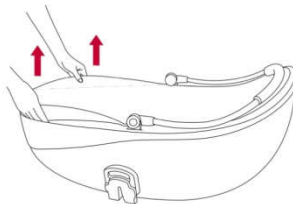
## CRADLE INSTALLATION/DEINSTALLATION



12



13



14

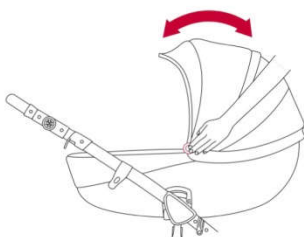
+ To install the cradle, insert its adaptors into the adaptor pockets located inside the frame (Fig. 12). The cradle adaptors are blocked automatically. To remove the cradle, press the cradle adaptor buttons and lift it up (Fig. 12). The inner lining of the cradle may be removed and washed if necessary (Fig. 13, 14).

+ The cradle back located under the coconut mattress may be adjusted to a necessary height with the help of an adjusting knob located on the bottom of the cradle (Fig. 15).

## CRADLE HOOD AND COVER FOR FEET



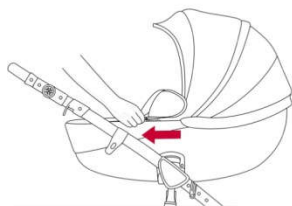
15



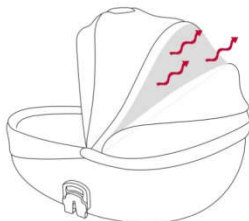
16



17



18



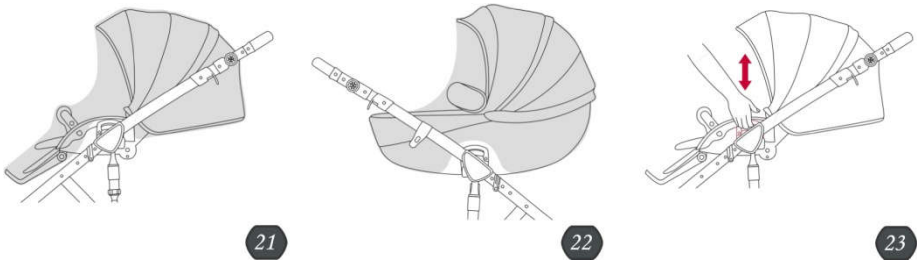
19



20

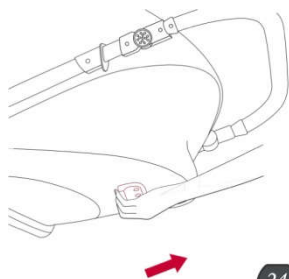
- + The cradle is equipped with a convenient folding hood that protects the child from natural phenomena (wind, sun, snow, rain).
- + The position of the cradle hood is adjusted with the help of two buttons located in the bottom of the hood (Fig. 16).
- + The cradle is equipped with an additional handle for carrying (Fig. 17).
- + The cradle is equipped with a cover for the child's feet that is attached to its front and fastened with a zipper and snappers on both sides (Fig. 18).
- + The cradle hood is ventilated; for that, unfasten the zipper on the roof and turn down the bottom part (Fig. 19).
- + The baby carriage is equipped with insect protection (Fig. 20).
- + The baby carriage is equipped with rain protection suitable both for the cradle and the stroller unit (Fig. 21, 22).

## STROLLER UNIT INSTALLATION/DEINSTALLATION

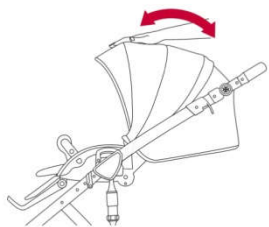


- + To install the stroller units, insert its adaptors into the adaptor pockets located inside the frame (Fig. 23). The stroller unit adaptors are blocked automatically. To remove the stroller unit, press the stroller unit adaptor buttons and lift it up (Fig. 23).
- + The stroller unit backrest can be adjusted to a necessary height with the help of a knob located on the back of the seat (Fig. 24).

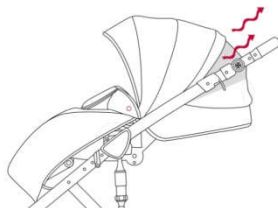
## STROLLER UNIT HOOD AND COVER FOR FEET



24



25



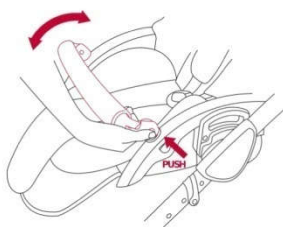
26

- + The stroller unit is equipped with a convenient folding hood that protects the child from natural phenomena (wind, sun, snow, rain).
- + The hood position is adjusted by pressing the hood top with your hand (Fig. 25).
- + The stroller unit is equipped with a cover for the child's feet that is fastened with snappers to the carriage front on both sides (Fig. 26).
- + The stroller unit hood is ventilated; for that, unfasten the zipper on the roof and turn down the bottom part (Fig. 26).

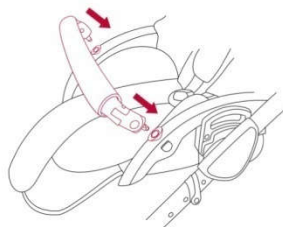
## FOOTREST, BUMPER AND FIVE-POINT SEATBELTS ADJUSTMENT



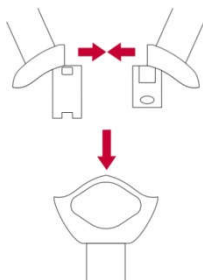
27



28



29



30

- + Footrest adjustment - push simultaneously the buttons located on both sides of the footrest and adjust it to the necessary height (Fig. 27).
- + Every stroller unit has a bumper; the protection fastened to it prevents the child from getting out of the carriage. Press simultaneously the red buttons located on both sides of the handle, adjust it to a height convenient for you (Fig. 28).
- + If it is necessary to remove the bumper, press the buttons and pull the handle up (Fig. 29).
- + If you wish to reinstall the bumper, insert it in the holes of the holders located on both sides of the stroller unit (Fig. 29).
- + The stroller unit is equipped with five-point seatbelts.
- + To fasten the child with seatbelts, insert seatbelt buckles into locks and stretch the belts (Fig. 30). In case it is necessary to unfasten the belts, push a button and remove buckles from the locks (Fig. 30).

## CARRYCOT



- + It is possible to install a carrycot on the carriage frame as well. It must be fastened to specially made adaptors (Fig. 31).
- + If it is necessary to fasten the carrycot, insert the adaptors into the adaptor pockets on the frame (Fig. 31) and fasten the carrycot (Fig. 32). The adaptors are blocked automatically.
- + The carrycot is equipped with a cover for the child's feet that is fastened to the carrycot body by snappers (Fig. 32) and safety belts.
- + To remove the carrycot from the frame, press simultaneously the button located on both sides of the seat (Fig. 33).
- + The carrycot may be fastened in a car by car seatbelts.

## MANUFACTURER'S GUARANTEES

- + Guaranteed service life: 1 year.
- + Guaranteed shelf life: 2 years.
- + Useful life: 3 years.
- + The manufacturer reserves the right to modify the item slightly. Such modifications may be omitted in this manual.

Made in 2019

### **Please note that repairs are not covered by this guarantee if:**

- + The problem is caused by improper use or maintenance. Please consult this manual.
- + The damage is caused by incorrect installation of parts and/or accessories. Please consult the carriage assembly manual.
- + Corrosion, salt or sand damage caused by lack of maintenance or service.
- + Damage caused by normal wear and tear resulting from everyday use or negligence.
- + The damage was caused by intense sunlight, sweat, use of detergents, storage in a damp place or frequent washing.
- + Repair or modifications were carried out by a third party.
- + The baby carriage was bought second-hand.
- + The carriage was damaged as a result of an accident or transportation.

### **The guarantee obligations do not apply to:**

- + All components made of textile and oil cloth;
  - + Shopping baskets;
  - + Zippers and rivets;
  - + Rain covers and mosquito nets;
  - + Bags and their fastenings;
  - + Wheel turning locks;
  - + Handle hinge units.
- 
- + This guarantee certificate cannot be transferred to other persons.
  - + The guarantee applies only to retail buyers and is only valid subject to availability of evidence of purchase (a receipt).
  - + This guarantee certificate is only valid in the country where the item was bought.
  - + maEma will replace parts or repair the item as determined by the company. maEma reserves the right to exchange a part by a spare one.

GUARANTEE

# GUARANTEE CARD

The name of the product	
Model	
Country of manufacture	
Date of purchase	

## Seller information

Firm (seller)	
Address	
Phone	
Seller's signature	

Seal of the  
seller's  
company

I have received the item in good repair and in full. I have no claims as to its completeness, quantity and external appearance. I received the operation manual. I have been familiarized with the guarantee terms and I agree with them:

Buyer's signature (decoding the signature)

**Dear customer, We thank you for your choice. We guarantee you high quality and problem-free functioning of this product subject to your compliance with its operation rules.**